

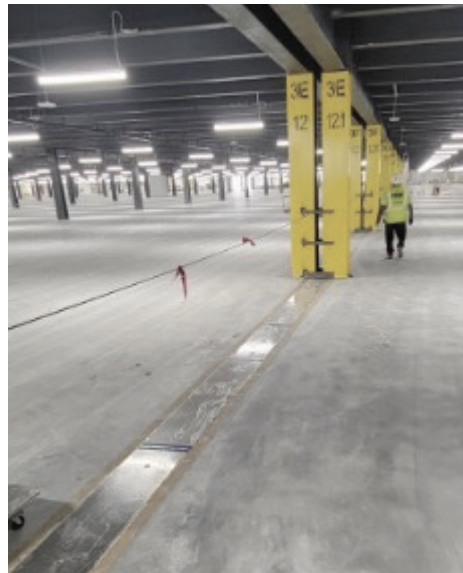
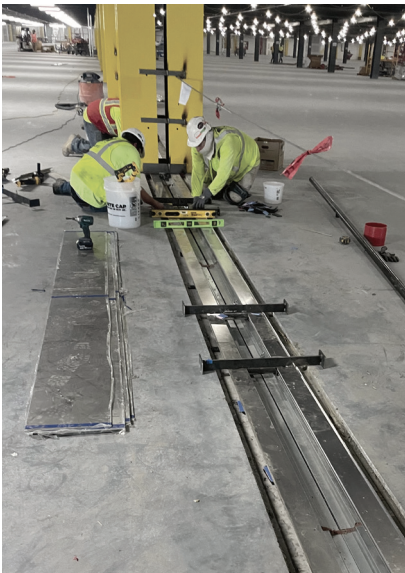


SOLUTIONS FOR

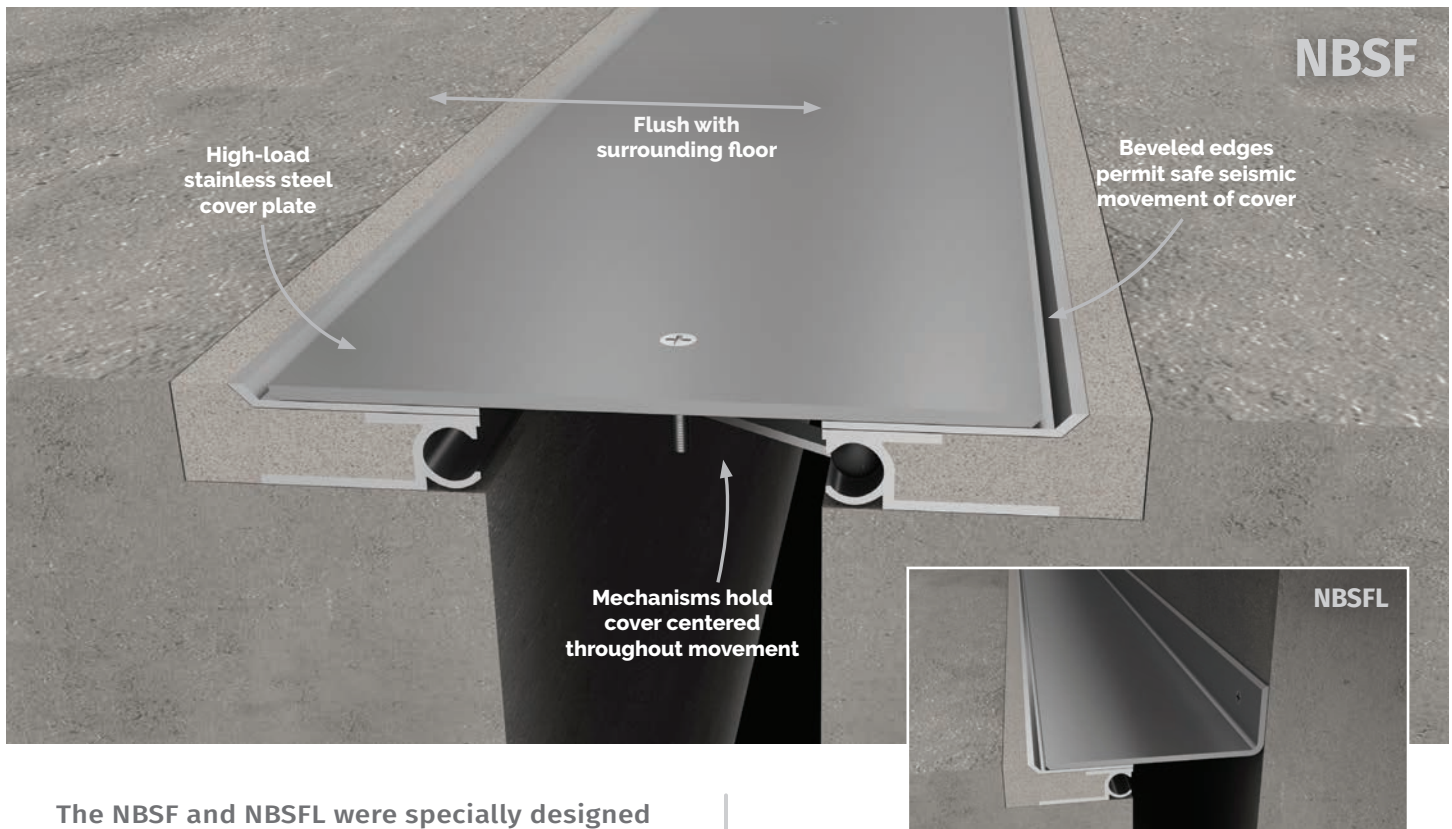
WAREHOUSES & DATA CENTERS

Expansion joint solutions that accommodate operations of warehouse facilities

Expansion joints are an essential aspect of large buildings, especially Warehouses and Data Centers. With the innumerable factors that building types like these must consider, an answer for expansion joints must be simple but effective. Balco is able to take the guesswork out with products that install easily, are economical, withstand every day wear and tear, and prevent disruption to daily functions.



"NO BUMP" FLOOR SYSTEM:

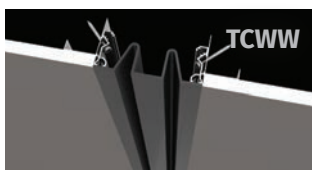


The NBSF and NBSFL were specially designed for the rigors of foot traffic and wheeled loads common to warehouses, storehouses, etc. These "No Bump" floor assemblies have minimal disruption across floor transitions, even able to accommodate sensitive robotic equipment. Both system configurations prominently feature a directionally-textured stainless steel plate,

3/16" thick, uniquely engineered for concentrated heavy loads. The NBSF and NBSFL are available from 1" to 12" nominal joint sizes, are capable of up to $\pm 100\%$ movement with up to $\pm 50\%$ lateral shear, require low maintenance, and are environmentally friendly.

Learn more at balco.us/nbsf

ADDITIONAL SYSTEMS:



Interior Wall Face Seal



Interior Wall Cover Plate



EPDM Roof Bellow



Exterior Wall Face Seal



Exterior Wall Foam Seal

Balco, Inc. 2626 S Sheridan, Wichita, Kansas 67217 316.945.9328 | 800.767.0082 balcousa.com

A CSW Industrials Company. Balco, the logos and other trademarks are property of Balco, Inc., its affiliates or its licensors and are protected by copyright, trademark and other intellectual property laws, and may not be used without permission. Balco, Inc. reserves the right to change specifications without prior notice.
©2022 Balco, Inc. All rights reserved. B50081-0122