



SOLUTIONS FOR

# RETROFIT

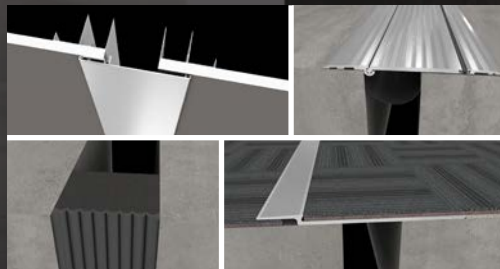
EXPANSION JOINT SYSTEM PRODUCTS

Are you a designer,  
job superintendent or  
procurement manager with  
a **RENOVATION** project?



Retrofit products are ideal for  
**RENOVATION PROJECTS** as well as  
**NEW CONSTRUCTION** applications  
where accommodations (such  
as blockouts) were not made for  
the expansion joint cover.

Balco has solutions for  
**RETROFIT FIELD CONDITIONS**  
that are non-invasive,  
non-disruptive, and  
easy to install as-is.





**THERMAL**  
MOVEMENT

A Recommended Balco Solution:  
**BCP with WD**

**ARCHITECTURAL SYSTEMS**

INTERIOR FLOORS, WALLS, AND CEILINGS

**SEISMIC**  
MOVEMENT

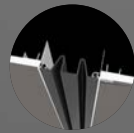
A Recommended Balco Solution:  
**BHSF with ISWSM**



**WD**

**Snap-on Cover**

- Low profile
- No exposed fasteners
- Paintable for matching color
- Easy maintenance



Other recommendation:  
GCWW Elastomeric Face Seal

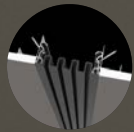


**ISWSM**

**TRIM LINE**

**Composite Panel with  
Magnet Retention**

- Can be used for walls or ceilings
- Flush with surrounding surface
- No exposed fasteners
- Lightweight, durable panel
- Paintable for matching color
- Permits multi-direction movement



Other recommendation:  
TCVS Elastomeric Face Seal



**BCP**

**Carpet Surface Plate**

- Narrow exposed edge
- Thin profile
- No exposed fasteners
- Pedestrian load capable



Other recommendation:  
RPA Serrated Plate



**BHSF**

**Hinge Surface Plate**

- Heavy-duty plate
- Pedestrian load capable
- Permits multi-direction movement



**THERMAL**  
MOVEMENT

A Recommended Balco Solution:  
**ES with BCSW**

**PARKING AND OPEN AIR SYSTEMS**

EXTERIOR FLOORS AND WALLS

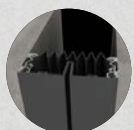
**SEISMIC**  
MOVEMENT

A Recommended Balco Solution:  
**DFH with FCWW**



**BCSW**  
Pre-compressed Foam Seal

- Waterproof, mildew-resistant
- Airtight, dust-proof
- Sound-resistant
- Insulated
- Conforms to minor joint irregularities
- No mechanical fasteners
- Range of color options



Other recommendation:  
EV Silicone Face Seal



**ES**  
Elastomeric Compression Seal

- High-strength compression
- Waterproof
- Debris resistant
- No mechanical fasteners



Other recommendation:  
BCSF-SL Pre-compressed  
Foam Seal



**ROOF**  
RECOMMENDATION  
**9W**



**FCWW**  
Elastomeric Face Seal

- Flush with wall
- No exposed fasteners
- Up to 36" joint size
- Waterproof
- Range of color options



Other recommendation:  
BSLJ Large Seismic Foam Seal



**DFH**  
Heavy-Duty Dual Hinge

- Designed for heavy loading (up to slow vehicular)
- Permits multi-directional movement
- Waterproof
- Easy maintenance

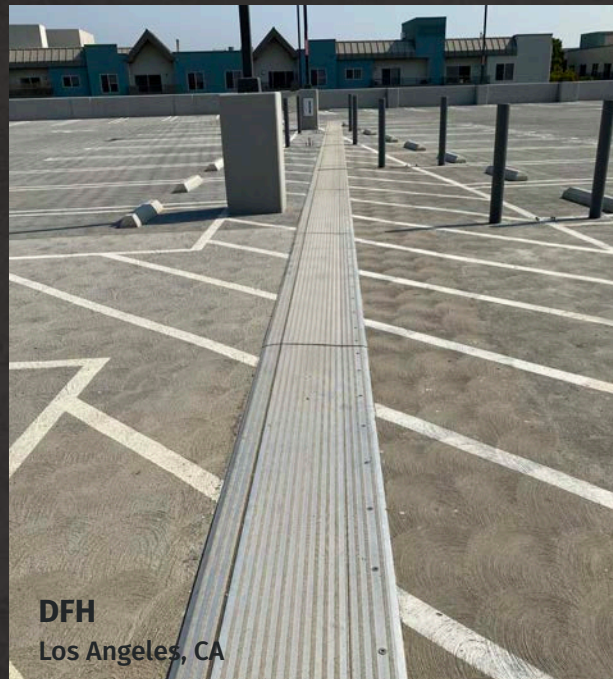




**FCWW**  
Medical Center of Trinity, FL



**WD**  
Medical Center of Trinity, FL



**DFH**  
Los Angeles, CA



**ISWM**  
Nashville Airport

Balco's long-standing industry experience and tested products will provide the expertise, customization and cost savings needed in the successful completion of any project, especially retrofit conditions. Be sure to make Balco an integral part of your design and decision-making process.