



STAIR NOSINGS

- Slip-resistant treads
- Low profiles (ADA compliant)
- Protects from rigors of foot traffic



Ensuring traction
and protection at the
edge of steps

Scan for more:



balco.us/sn

QUICK REFERENCE GUIDE

Spec Section 055500



A CSW Industrials Company

For photoluminescent
stair nosings, see
Quick Reference Guide:

IllumiTread™
Stair Nosings



CERTIFIED ISO 9001
Quality Management System



Balco, Inc. Wichita, Kansas 67219 316.945.9328 | 800.767.0082 balcousa.com

A CSW Industrials Company. Balco, the logos and other trademarks are property of Balco, Inc., its affiliates or its licensors and are protected by copyright, trademark and other intellectual property laws, and may not be used without permission. Balco, Inc. reserves the right to change specifications without prior notice.

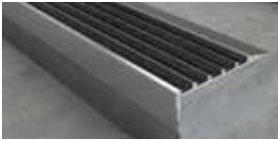
©Balco, Inc. All rights reserved. B50081-0122

STAIR NOSINGS



RETROFIT

RIBBED ABRASIVE



RS

SURFACE MOUNT

Adhesive-only Option

VERSIONS:

RS-405LP - 4" width; 80°

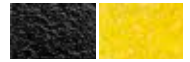
RS-405L - 4" width; 90°

RS-1116L - 11" width; 90°



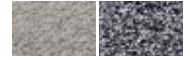
COLOR OPTIONS:

ABRASIVE



Black

Yellow



Nickel

Gray

Black

Rain

SINGLE COMPONENT

SOLID ABRASIVE



H

CAST-IN/BLOCKOUT

Set-back

AVAILABLE IN:

1, 2 and 3" widths



P

CAST-IN

Bullnose

AVAILABLE IN:

2" and 3" widths



PC

CAST-IN/BLOCKOUT

Narrow, Set-back

1.375" width



R-300

CAST-IN/BLOCKOUT

Set-back

3" width



R-315LP

CAST-IN/BLOCKOUT

Angled nose

3" width, 80°

RIBBED ABRASIVE cont'd



R-315P

CAST-IN/BLOCKOUT

Bullnose

3" width

VERSION: R-315PC



T-213

CAST-IN/BLOCKOUT

Narrow, Ribbed

2" width



T-417

CAST-IN/BLOCKOUT

Wide, Ribbed

4" width

TWO COMPONENT

RIBBED ABRASIVE



DST

CAST-IN

Set-back, Solid

3.25" width



DXH

CAST-IN

Bullnose, Solid

3.25" width



XH

CAST-IN

Bullnose, Solid, + Fastener

3.25" width

SOLID ABRASIVE



AB

CAST-IN/BLOCKOUT

Block Strip

AVAILABLE IN:

1, 2 and 3" widths



ANB

CAST-IN/BLOCKOUT

Bullnose Strip

AVAILABLE IN:

1, 2 and 3" widths



AS

CAST-IN/BLOCKOUT

Angled Strips

Perfect for Radius Stairs

AVAILABLE IN:

1/4, 3/8, and 1/2" widths

ABRASIVE BAR

