



FIRE & WEATHER BARRIERS

- Restrict the spread of smoke & fire
- Accommodate building movement
- Meet recognized building codes
- Tested to ASTM E1966 and UL 2079



Maintains
fire resistance
in fire-rated joints

Scan for more:



balco.us/fb

QUICK REFERENCE GUIDE

Spec Section 079500



A CSW Industrials Company

INCLUDES:

SEISMIC
JOINT
SYSTEMS

 = Seismic System

CERTIFIED ISO 9001
Quality Management System



Balco, Inc. Wichita, Kansas 67219 316.945.9328 | 800.767.0082 balcousa.com

A CSW Industrials Company. Balco, the logos and other trademarks are property of Balco, Inc., its affiliates or its licensors and are protected by copyright, trademark and other intellectual property laws, and may not be used without permission. Balco, Inc. reserves the right to change specifications without prior notice.

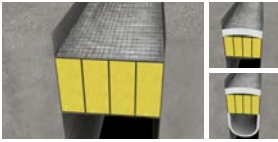
©Balco, Inc. All rights reserved. B50081-0122

FIRE BARRIERS



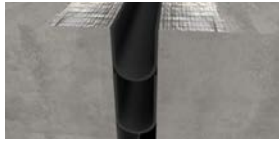
FLOORS

METABLOCK



MetaBlock®
(MBF2H, MBF3H, MBF4H)
2-4 Hour
1-4" [25-100mm] (6" Max Open)
±50% to ±100% / Seismic

METAMAT



MetaMat™
(MF2H)
2 Hour
1-4" [25-100mm] (6" Max Open)
±50% to ±100% / Seismic

METAFLX



MetaFlex® Pro
(MPF2H, MPF3H)
2-3 Hour
6-24" [150-600mm] (36" Max Open)
±50% to ±100% / Seismic
Single-package



MetaFlex® Pro Shear
(MPSF2H)
2 Hour
6-24" [150-600mm] (36" Max Open)
±25% to ±50% / Seismic



MetaFlex® Pro Shear MAX
(MPSF2H)
2-3 Hour
26-36" [650-900mm] (72" Max Open)
±50% to ±100% / Seismic

METAFLX cont'd

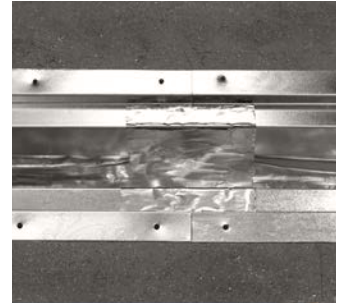


MetaFlex® Pro Undermount
(MPUF2H)
2 Hour
6-24" [150-600mm] (36" Max Open)
±50% to ±100% / Seismic

FIRE-RATED FOAM

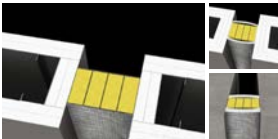


FR Pre-compressed Foam
(2FRBCSF-SL, 3FRBCSF-SL)
2-3 Hour
0.5 up to 6" [12.5-150mm]
±25% to ±50% / Seismic
Single & two-sided Silicone



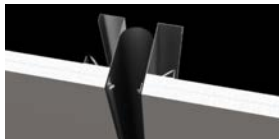
WALLS

METABLOCK



MetaBlock®
(MBW2H, MBW3H, MBW4H)
2-4 Hour
1-4" [25-100mm] (6" Max Open)
±50% to ±100% / Seismic

METAMAT



MetaMat™
(MW2H)
2 Hour
1-4" [25-100mm] (6" Max Open)
±50% to ±100% / Seismic

METAFLX



MetaFlex® Pro Shear
(MPSW2H)
2 Hour
4-12" [100-300mm] (18" Max Open)
±50% to ±100% / Seismic
Single-package

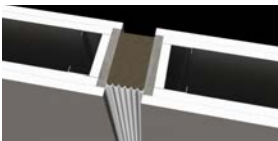


MetaFlex® Pro Shear
(MPSW3H)
3 Hour
6-12" [150-300mm] (18" Max Open)
±50% to ±100% / Seismic
Single-package



MetaFlex® Pro Shear MAX
(MPSW2H)
2 Hour
20-48" [500-1200mm] (72" Max Open)
±50% to ±100% / Seismic

FIRE-RATED FOAM



FR Pre-compressed Foam
(2FRBCSW, 3FRBCSW)
2-3 Hour
0.5 up to 5" [12.5-125mm]
±25% to ±50% / Seismic
Single & two-sided Silicone

SmokeBlock



Smoke & Water Barrier
(EJSB)
6-24" [150-600mm]
±50% to ±100% / Seismic

Weather Barriers



MetaGuard Water Barrier
(WB)
1-24" [25-600mm]
±50% to ±100% / Seismic



MetaGuard Thermal Vapor Barrier
(MGTV)
4-36" [100-900mm]
±50% to ±100% / Seismic



**EXPANSION
JOINT
SYSTEMS**



**ACOUSTICAL
JOINTS AND
PARTITION
CLOSURES**



**FIRE
BARRIERS**



**METACAULK®
FIRESTOPPING**



**STAIR
NOSINGS**



**MATS AND
GRIDS**



**TRENCH
AND ACCESS
COVERS**



**ILLUMITREAD™
EGRESS**