



EXPANSION JOINT SYSTEMS



Improving life
safety and building
integrity by providing
structures with the
flexibility to naturally
shift and move

QUICK REFERENCE GUIDE

Spec Section 079500



Expansion Joint Cover Systems

- Blend in with surroundings
- Accommodate building movement
- Meet recognized building codes
- Tested to high performance standards

Warehouses & Data Centers
Parking Garages
Hospitals & Medical Facilities
Airports
Schools & Universities
Shopping Centers & Malls
Hotels & Casinos
Stadiums & Arenas
Convention Centers
High-rises

INCLUDES:

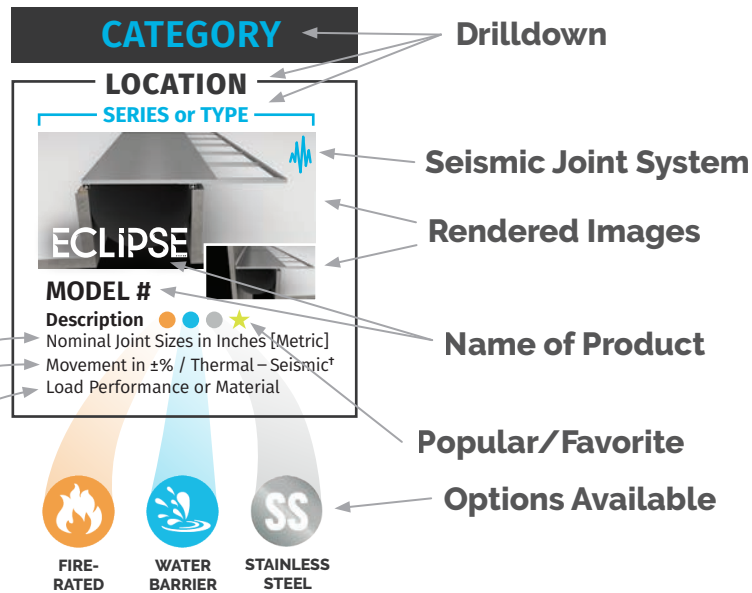
SEISMIC
JOINT
SYSTEMS
AND
silent
SERL

Scan for more:



balco.us/ejc

HOW TO USE THIS QUICK REFERENCE GUIDE:



HOW TO SELECT A EXPANSION JOINT SYSTEM:

- 1 Joint Context (Floor, Wall, Ceiling, etc.)
- 2 Expected Joint Size & Movement
- 3 Interior & Exterior Considerations
- 4 Load Capacity
- 5 Fire-rating Considerations
- 6 Placement & Adjacent Construction
- 7 Aesthetics

*Thermal, wind sway & seismic is defined as per standard ASTM E1399.

*Not every option within a series is necessarily available. Exceptions may apply. Corner options available for most systems. Larger widths may be available for some systems (contact Balco directly to inquire). Visit balcousa.com for additional details, including load performance, color options and test data.

NOTE: All information is up-to-date through 1/1/22. Balco may make additions, deletions or modifications to products and content since this date. Visit balcousa.com for the latest information.



INTERIOR FLOORS

NO BUMP SERIES



NBR

Tile Recessed
1-12" [25-300mm]
±50% to ±100% / Seismic
Pedestrian



NBAF

Smooth
1-12" [25-300mm]
±50% to ±100% / Seismic
Pedestrian
NBSF - SS Plate - Warehouse System



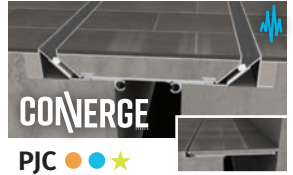
HDNB

Smooth Heavy Duty
2-8" [50-200mm]
±50% to ±100% / Seismic
Scissor Lift



HDTH

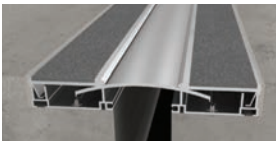
Heavy Duty Twin Hinge
1-4" [25-100mm]
Up to ±25% / Thermal
Forklift (Class 2)



PJC

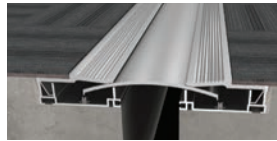
Pan System
2-24" [50-600mm]
±50% to ±100% / Seismic
X-Ray

GLIDE PLATE SERIES



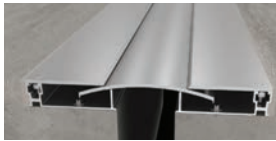
6FA

Abrasive-filled
1-8" [25-200mm+]
±50% to ±100% / Seismic
Pedestrian



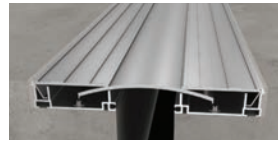
6FC

Carpet Recessed
1-8" [25-200mm+]
±50% to ±100% / Seismic
Pedestrian



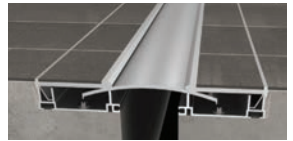
6FP

Smooth
1-12" [25-300mm+]
±50% to ±100% / Seismic
Pedestrian



6FS

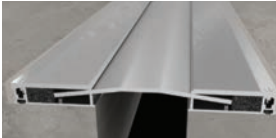
Grooved
1-8" [25-200mm+]
±50% to ±100% / Seismic
Pedestrian



6FTP

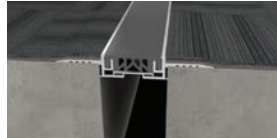
Tile Recessed
1-8" [25-200mm+]
±50% to ±100% / Seismic
Pedestrian

GLIDE PLATE SERIES cont'd



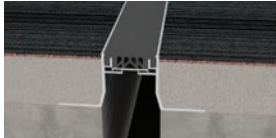
XH4FS

Tile Recessed
1-4" [25-100mm]
±100% / Seismic
Passenger Cart



75FCE

Carpet Surface Mount
1-2" [25-50mm]
±25% / Thermal
Pedestrian



75FP

Recessed Mount
1-2" [25-50mm]
±25% / Thermal
Pedestrian



75FPE

Smooth Surface Mount
1-2" [25-50mm]
±25% / Thermal
Pedestrian



75FTE

Tile Surface Mount
1-2" [25-50mm]
±25% / Thermal
Pedestrian

DUAL ELAST. SEAL SERIES



95GFPB

Smooth
2-12" [50-300mm+]
±50% to ±100% / Seismic
Pedestrian



95GFTB

Tile Recessed
2-12" [50-300mm+]
±50% to ±100% / Seismic
Pedestrian



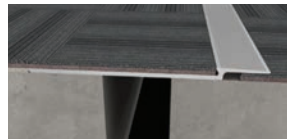
1120 (& 1420)

Recessed
1-2" [25-50mm]
±50% / Seismic
Pedestrian



G

Surface Mount Plate
1-2" [25-50mm]
±50% / Seismic
Pedestrian



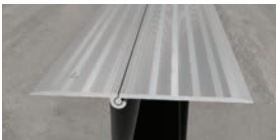
BCP

Carpet
1-2" [25-50mm]
±50% / Seismic
Pedestrian

GYMNASIUM SERIES

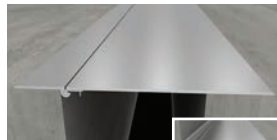
SURFACE PLATE SERIES

SURFACE PLATE SERIES cont'd



BHS

Hinge
2-6" [50-150mm]
±50% / Seismic
Slow Vehicular



BHSF

Hinge Plate
2-16" [50-400mm]
±50% to ±100% / Seismic
Pedestrian



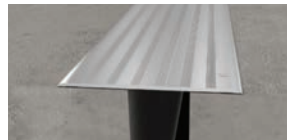
EXBF

Smooth
2-18" [50-450mm]
±50% to ±100% / Seismic
Pedestrian



EXF

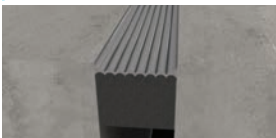
Tile
2-18" [50-450mm]
±50% to ±100% / Seismic
Pedestrian



RPA

Serrated Plate
1-6" [25-150mm]
±50% to ±100% / Seismic
Pedestrian

FOAM SEAL SYSTEMS



BCSF-SL

Pre-compressed Primary Seal
0.5-6" [13-150mm]
±50% / Seismic
Slow Vehicular



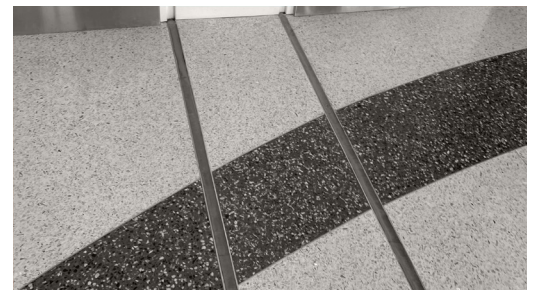
BSLJ

Large Seismic Foam Seal
6-15" [150-375mm]
±25% / Seismic



BHFE

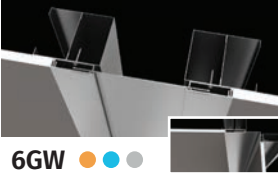
Non Pre-compressed EVA Seal
0.5-4" [13-100mm]
±25% / Seismic
Slow Vehicular





INTERIOR WALLS & CEILINGS

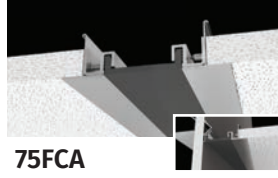
GLIDE PLATE SERIES



6GW ● ● ●
Recessed
 1-12" [25-300mm+]
 ±50% to ±100% / Seismic



6TW ● ● ●
Surface Mount
 1-8" [25-200mm+]
 ±50% to ±100% / Seismic



75FCA
Acoustical Ceiling
 1-2" [25-50mm]
 ±25% / Thermal



75FWG ●
Drywall
 1-2" [25-50mm]
 ±25% / Thermal



75FWP ●
Plaster
 1-2" [25-50mm]
 ±25% / Thermal

ELASTOMERIC SEAL SERIES cont'd



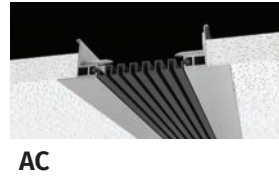
75FWPE ●
Surface Mount Smooth
 1-2" [25-50mm]
 ±25% / Thermal



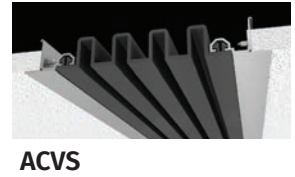
CE ● ● ● ★
Silicone Compression
 1-4" [25-100mm]
 Varied / Seismic



95GW ● ● ●
Drywall
 2-12" [50-300mm]
 ±50% to ±100% / Seismic



AC
Accordion Acoustical Ceiling
 1-3" [25-75mm]
 ±100% / Seismic

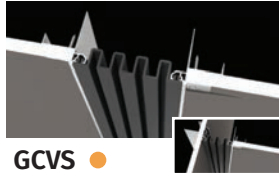


ACVS
Flush Acoustical Ceiling
 2-10" [50-250mm]
 ±100% / Seismic

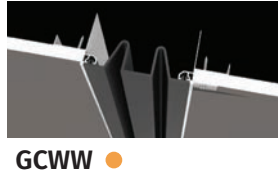
FACE SEAL SYSTEMS cont'd



ACWW
Flush Acoustical Ceiling
 2-10" [50-250mm]
 ±50% / Seismic



GCVS ●
Surface Mount Wall
 2-10" [50-250mm]
 ±100% / Seismic



GCWW ●
Surface Mount Wall
 2-10" [50-250mm]
 ±50% / Seismic



TCVS ●
Flush Wall
 2-12" [50-300mm+]
 ±100% / Seismic



TCWW ● ● ★
Flush Wall
 2-18" [50-450mm+]
 ±50% / Seismic

FACE SEAL SYSTEMS cont'd



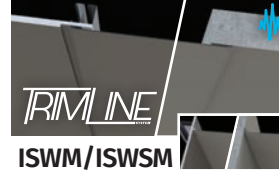
IS ● ● ★
Silicone Face
 2-12" [50-300mm+]
 ±50% / Thermal



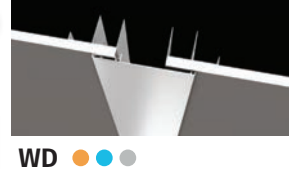
CM ● ● ● ★
Low Profile Surface Mount
 3-18" [75-450mm+]
 ±50% to ±100% / Seismic



FC ● ● ●
Recessed
 4-18" [100-450mm+]
 ±50% to ±100% / Seismic



ISWM/ISWSM
TrimLine System ● ●
 4-36" [100-900mm]
 ±50% to ±100% / Seismic



WD ● ● ●
Snap-on
 1-4" [25-100mm]
 ±50% / Seismic

SURFACE PLATE SERIES



BCSW ●
Pre-compressed Primary Seal
 0.5-12" [13-300mm]
 ±50% / Seismic



BCSWE
Non Pre-compressed Foam Seal
 0.5-10" [13-250mm]
 ±25% / Seismic



BBSW
Pre-compressed Secondary Foam Seal
 0.5-8" [13-200mm]
 ±50% / Seismic



BSLJ ★
Large Seismic Foam Seal
 6-15" [150-375mm]
 ±25% / Seismic

ACOUSTICAL JOINT

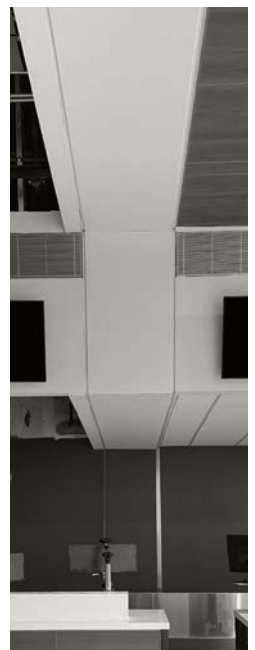


BQSWA/E
Acrylic (and Wax) Foam
 1-6" (1/4" increments) [25-150mm]
 Thermal Expan./Contr.



silent SEAL

Dense foam filler that hinders the transmission of sound, with reduction quality ratings of up to STC-54 and OITC-47





EXTERIOR WALLS

METAL COVER SYSTEMS



9W ● ● ● ★
Surface Mount
1-18" [25-450mm]
±50% to ±100% / Seismic



CMX ● ● ●
Low Profile
3-18" [75-450mm]
±50% to ±100% / Seismic



PSWXP ● ● ●
ConCeal Series - Plate
8-36" [200-900mm]
±50% to ±100% / Seismic



PSWXP ● ● ●
ConCeal Series - Field Plate
8-36" [200-900mm]
±50% to ±100% / Seismic



PSWXR ● ● ●
ConCeal Series - Recess
8-36" [200-900mm]
±50% to ±100% / Seismic

ELASTOMERIC SEAL SYSTEMS



CE ● ● ● ★
Silicone Compression
1-4" [25-100mm]
Varied / Seismic



EV ● ● ● ★
Silicone Face
2-12" [50-300mm]
±50% / Seismic



FCVS ● ●
Flush Wall
2-18" [50-450mm+]
±100% / Seismic
Santoprene or Silicone



FCWW ● ● ● ★
Flush Wall
2-18" [50-450mm+]
±50% / Seismic
Santoprene or Silicone

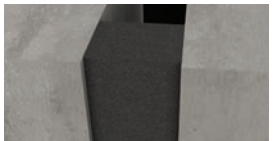


BCSW ●
Pre-compressed Primary
Foam Seal
0.5-12" [13-300mm]
±50% / Seismic

FOAM SEAL SYSTEMS cont'd



BCSWE
Non Pre-compressed
Foam Seal
0.5-10" [13-250mm]
±25% / Seismic



BBSW
Pre-compressed Secondary
Foam Seal
0.5-8" [13-200mm]
±50% / Seismic



ROOFS

METAL PLATE SYSTEMS



9W ● ● ● ★
Flat Curb
1-18" [25-450mm]
±50% to ±100% / Seismic



FR ● ● ●
Straight Curb
1-18" [25-450mm]
±50% to ±100% / Seismic



LPR ● ● ●
Canted Curb
1-18" [25-450mm]
±50% to ±100% / Seismic



TRX ● ● ●
Flat Curb
12-36" [300-900mm]
±50% to ±100% / Seismic



TRXM ● ● ●
Flat Curb
6-24" [150-600mm]
±50% to ±100% / Seismic

BELLOW SYSTEMS



BRB ● ● ●
Traditional
2-24" [50-600mm]
±50% to ±100% / Seismic



RRg
Silicone
2-12" [50-300mm+]
±50% / Seismic



PARKING & OPEN-AIR SYSTEMS

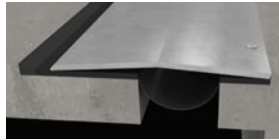


EXTERIOR FLOORS

METAL COVER SYSTEMS



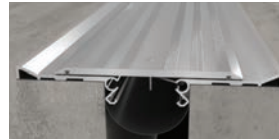
HDHP ●●●
Heavy Duty Hinge Plate
6-24" [150-600mm]
±50% to ±100% / Seismic
Slow Vehicular



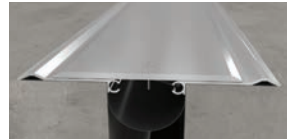
HPG ●●●
Recessed Steel Plate
2-12" [50-300mm+]
±50% to ±100% / Seismic
Slow Vehicular



SBNB ●●●
Shallow Blockout No Bump
3-18" [75-450mm]
±50% to ±100% / Seismic
Slow Vehicular, Class FL 2 Forklift

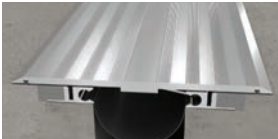


SBP ●●●★
Shallow Blockout
3-18" [75-450mm]
±50% to ±100% / Seismic
Slow Vehicular

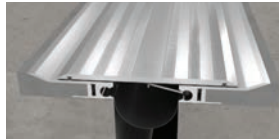


SM ●●●
Surface Mount
3-18" [75-450mm]
±50% to ±100% / Seismic
Slow Vehicular

METAL COVER SYSTEMS cont'd



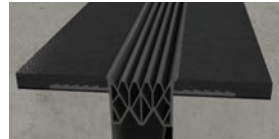
SMPQ ●●●
Surface Plate
2-16" [50-400mm]
±50% to ±100% / Seismic
Slow Vehicular



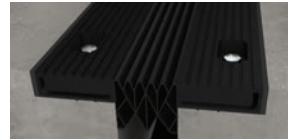
SWPQ ●●●
Recessed Blockout
2-8" [50-200mm]
±50% to ±100% / Seismic
Slow Vehicular



REHP ●●●
Rubber Encapsulated Hinged Plate
2-7" [50-175mm]
±50% to ±100% / Seismic
Slow Vehicular



CS ●●●★
Winged Multi-chambered Seal
1.5-3.5" [38-90mm]
Varied / Seismic
Slow Vehicular



RB ●●●
Rubber Block Seal
1.5-3.5" [38-90mm]
Varied / Seismic
HS-20 Vehicular

ELASTOMERIC cont'd



ES ●●●★
Epoxy Bonded Seal
1-3" [25-75mm]
Varied / Seismic
Slow Vehicular



BCSF-SL ●
Pre-compressed Primary Foam Seal
0.5-6" [13-150mm]
±50% / Seismic
Slow Vehicular



BSLJ ★
Large Seismic Foam Seal
6-15" [150-375mm]
±25% / Seismic



BHFE
Non Pre-compressed EVA Foam Seal
0.5-4" [13-100mm]
±25% / Seismic
Slow Vehicular

FOAM SEAL SYSTEMS



A CSW Industrials Company



EXPANSION JOINT SYSTEMS



ACOUSTICAL JOINTS AND PARTITION CLOSURES



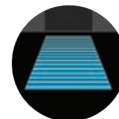
FIRE BARRIERS



METACAULK® FIRESTOPPING



STAIR NOSINGS



MATS AND GRIDS



TRENCH AND ACCESS COVERS



ILLUMITREAD™ EGRESS

CERTIFIED ISO 9001
Quality Management System



Balco, Inc. Wichita, Kansas 67219 316.945.9328 | 800.767.0082 balcousa.com

A CSW Industrials Company. Balco, the logos and other trademarks are property of Balco, Inc., its affiliates or its licensors and are protected by copyright, trademark and other intellectual property laws, and may not be used without permission. Balco, Inc. reserves the right to change specifications without prior notice.

©Balco, Inc. All rights reserved. B50081-0122