



EXPANSION JOINT & FIRESTOP SOLUTIONS FOR

DRYWALL

APPLICATIONS

EXPANSION
JOINT
SYSTEMS

metacaulk®



A CSW Industrials Company

***Building Solutions
with Integrity***

TABLE OF CONTENTS

Expansion Joint Systems ••••• 3-12

Metacaulk® Firestop Solutions ••••• 13-15

Balco is a renowned manufacturer of architectural products, offering a wide range of innovative expansion and seismic joint covers, fire barriers and firestop products designed to preserve the safety of commercial buildings and their occupants, with worldwide service and distribution.



A CSW Industrials Company

EXPANSION JOINT SYSTEMS

FOR DRYWALL

6GW

FLUSH MOUNT

SEE ALSO:

6TW

SURFACE MOUNT

- 1-12" Joint Size
- $\pm 50\%$ to $\pm 100\%$ Expansion/Contraction
- $\pm 50\%$ to $\pm 100\%$ Lateral Shear
- Allows seismic movement without disengagement of cover
- No exposed fasteners
- Easy to clean and maintain
- Clear anodized finish standard; Can be painted to match adjacent construction
- Center plate customizations available

TRIMLINE
SYSTEM

SEISMIC FLUSH PLATE

ISWM

- 4-36" Joint Size
- $\pm 50\%$ to $\pm 100\%$ Expansion/Contraction, Lateral and Vertical Shear
- Full multi-directional movement ideal for locations of high seismic activity
- Aluminum composite panel is lightweight and durable with variety of finish options
- Clean edges with narrow sightlines
- No exposed fasteners
- System of strong magnets, safety shock cord, and backup cable safety tethers permit safe movement and easy re-engagement after seismic activity

75FWG

ELASTOMERIC SEAL

- 1-2" Joint Size
- $\pm 25\%$ Expansion/Contraction
- Narrow sight-line
- Santoprene seal available in multiple standard colors

SEE ALSO:

75FWP

75FWPE

TRIMLINE
SYSTEM

SEISMIC SURFACE PLATE

ISWSM

- 4-36" Joint Size
- $\pm 50\%$ to $\pm 100\%$ Expansion/Contraction, Lateral and Vertical Shear
- Full multi-directional movement ideal for locations of high seismic activity
- Aluminum composite panel is lightweight and durable with variety of finish options
- Clean edges with narrow sightlines
- No exposed fasteners
- System of strong magnets, safety shock cord, and backup cable safety tethers permit safe movement and easy re-engagement after seismic activity



CM**SURFACE PLATE**

- 3-18" Joint Size
- $\pm 50\%$ to $\pm 100\%$ Expansion/Contraction
- Surface mounted
- Allows seismic movement without disengagement of cover
- Low profile keeps cover close to wall surface
- Easy to clean
- No exposed fasteners
- Centering bar device holds cover in place throughout movement (CML excluded)
- Clear anodized finish standard with paintable and stainless steel options available

SURFACE PLATE**WD**

- 1-4" Joint Size
- $\pm 50\%$ Expansion/Contraction, $\pm 50\%$ to $\pm 100\%$ Vertical Shear
- Allows seismic movement without disengagement of the cover
- Easy to clean
- Low profile
- No exposed fasteners
- Directionally sanded aluminum plate standard; Paintable option available

FC**FLUSH PLATE**

- 4-18" Joint Size
- $\pm 50\%$ to $\pm 100\%$ Expansion/Contraction
- Durable metal surface
- No exposed fasteners
- Centering bar device holds cover in place throughout movement
- Can be field painted to blend in with surrounding conditions

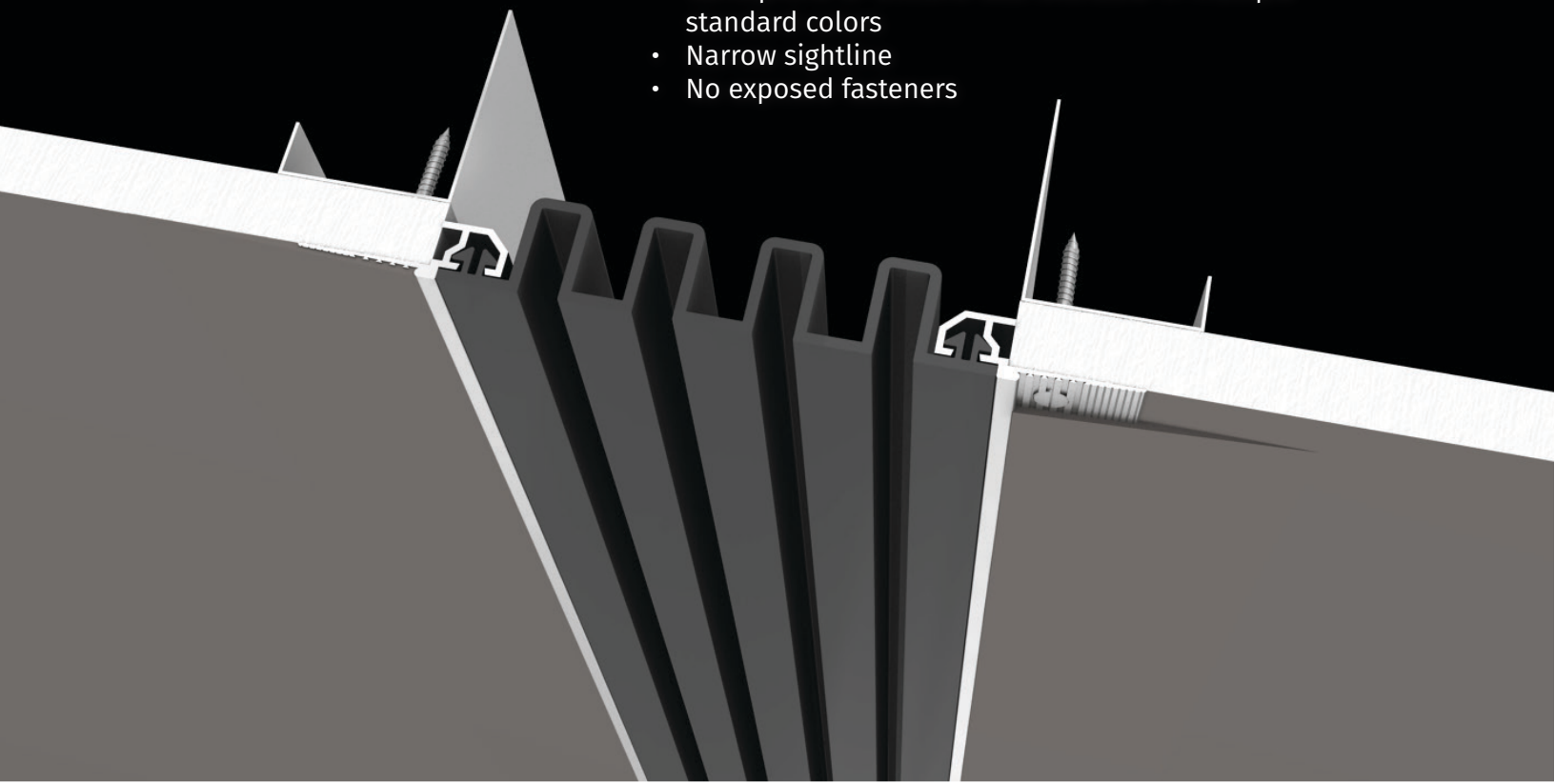
DUAL ELASTOMERIC SEAL**95GW**

- 2-12" Joint Size
- $\pm 50\%$ to $\pm 100\%$ Expansion/Contraction
- $\pm 50\%$ to $\pm 100\%$ Lateral Shear
- Mounted flush in drywall
- Santoprene seals available in multiple standard colors
- Centering bar device holds cover in place throughout movement (95GWC excluded)

GCVS

FACE SEAL

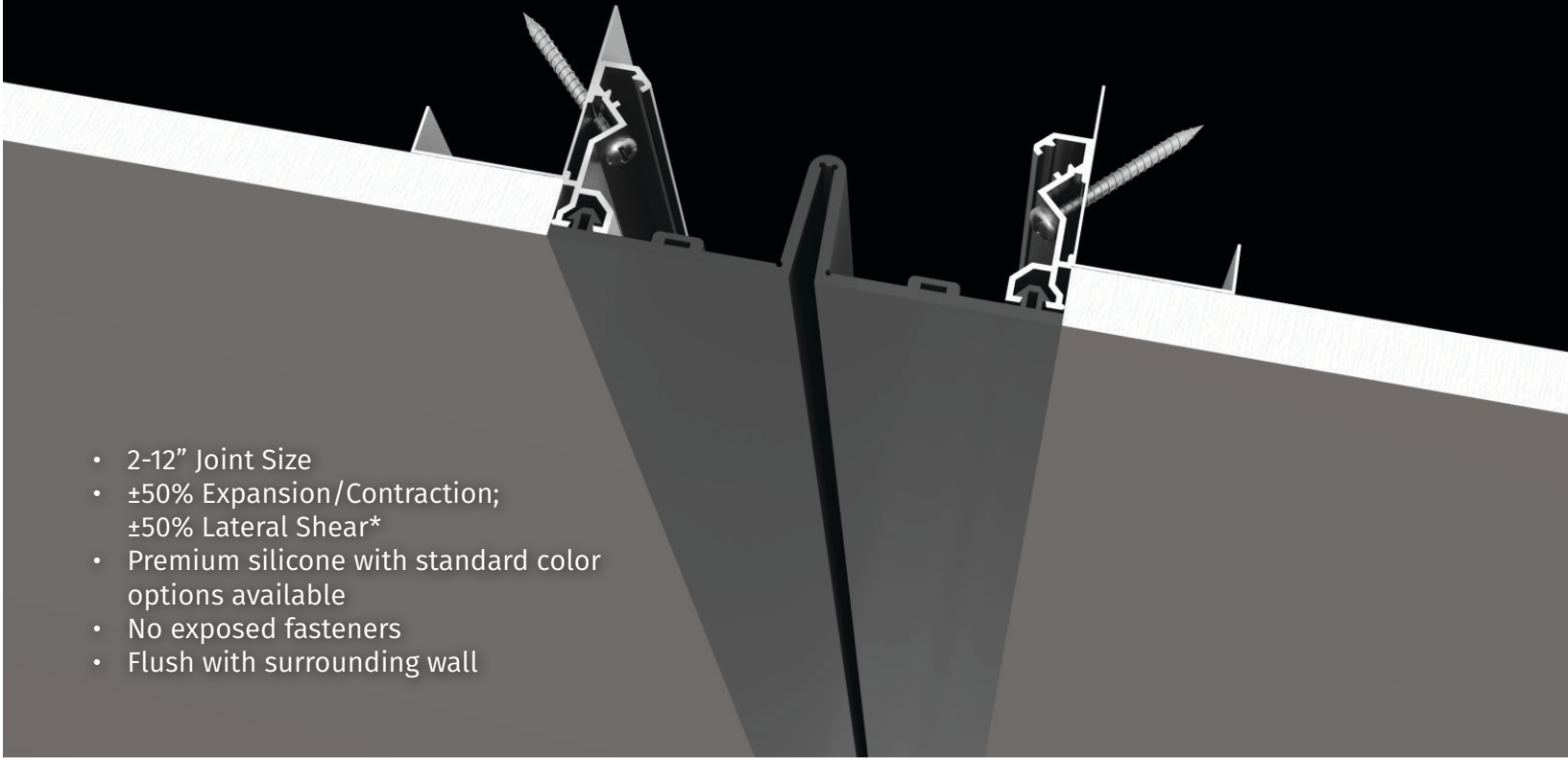
- 2-10" Joint Size
- $\pm 100\%$ Expansion/Contraction; $\pm 100\%$ Lateral Shear*
- Santoprene or silicone seal available in multiple standard colors
- Narrow sightline
- No exposed fasteners



FACE SEAL

IS

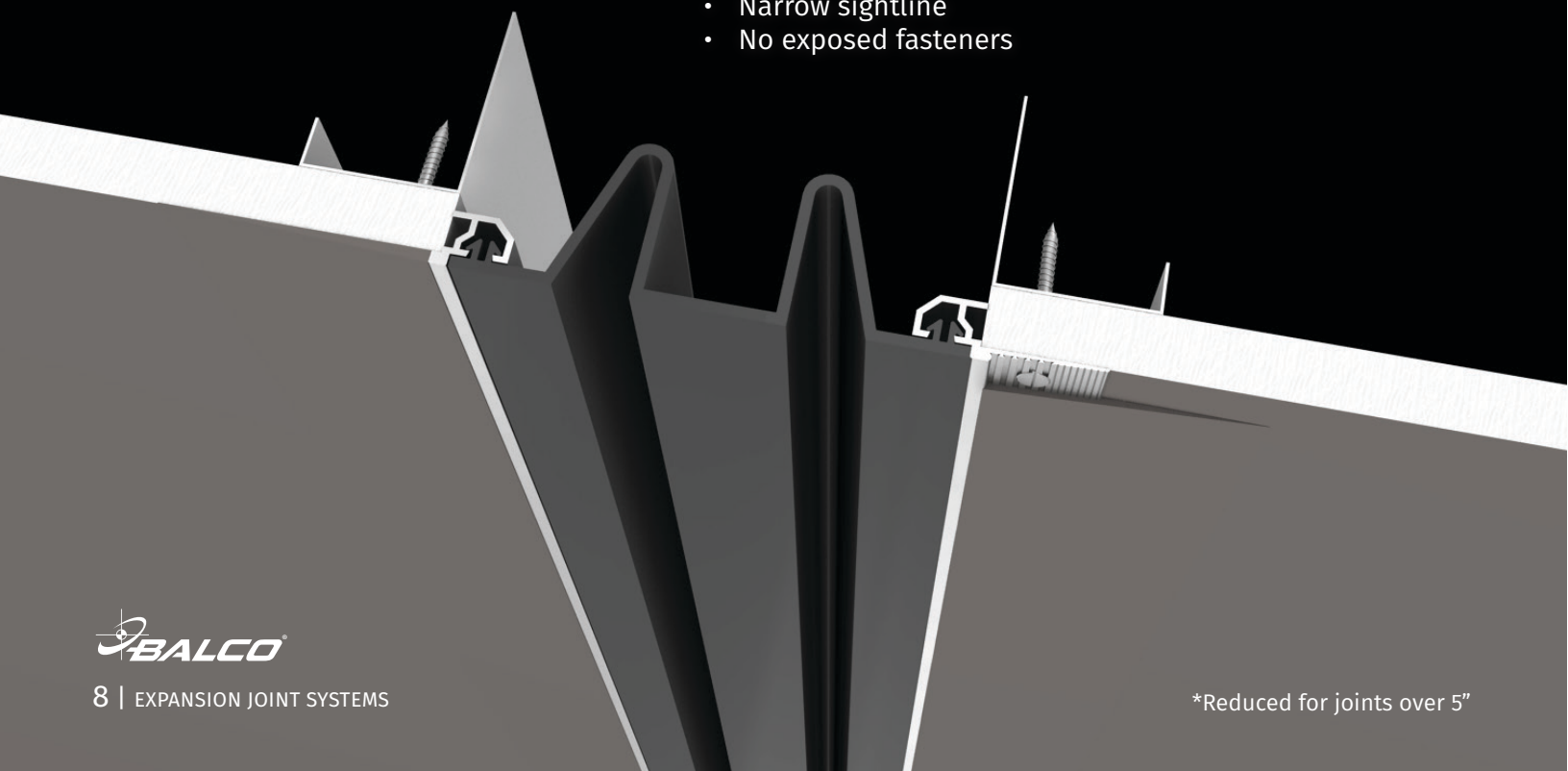
- 2-12" Joint Size
- $\pm 50\%$ Expansion/Contraction; $\pm 50\%$ Lateral Shear*
- Premium silicone with standard color options available
- No exposed fasteners
- Flush with surrounding wall



GCWW

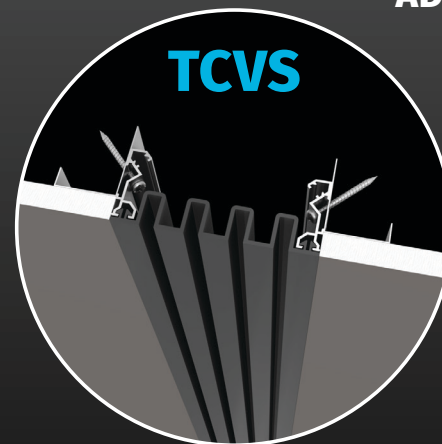
FACE SEAL

- 2-10" Joint Size
- $\pm 50\%$ Expansion/Contraction; $\pm 50\%$ Lateral Shear*
- Santoprene or silicone seal available in multiple standard colors
- Narrow sightline
- No exposed fasteners



SEE ALSO

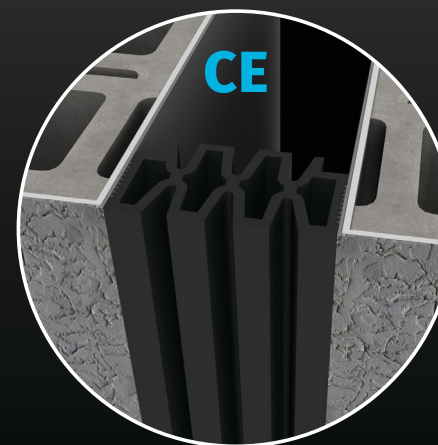
ADDITIONAL FACE SEAL OPTIONS



TCVS



TCWW



CE

*Reduced for joints over 5"



METAMAT™

FIRE BARRIER

- 6" max open
- Available in 2-hour rating
- ±50% to ±100% Expansion/Contraction
- Installs easily in narrow joints
- No caulking required
- Thin materials allow for more close movement than traditional barriers
- Lightweight and flexible
- Cost effective

METABLOCK®

FIRE BARRIER

- 6" max open
- Available in 2-hour, 3-hour and 4-hour ratings
- ±50% to ±100% Expansion/Contraction
- Installs without mechanical fasteners or fire caulking
- Applicable for variety of joint cover systems and materials; ideal for use with elastomeric seals
- Installs, splices, and transitions easily without mechanical fasteners or fire caulking

FIRE BARRIER

metaFLEX^{PRO} S H E A R 8-18"

- 8-18" max open
- Available in 2-hour rating
- ±50% to ±100% Expansion/Contraction
- Designed for shear movement
- Easy-to-handle rigid flanges
- No caulking required
- Intuitive lap splicing
- Convenient single package

SEISMIC FIRE BARRIER

metaFLEX^{PRO} S H E A R / MAX 39-72"

- 39-72" max open
- Available in 2-hour rating
- ±50% to ±100% Expansion/Contraction
- Designed for shear movement
- Accommodates larger expansion joints
- Easy-to-handle rigid flanges
- No caulking required
- Quick intuitive lap splicing

2FRBCSW/3FRBCSW

FIRE BARRIER

- 0.5-6" max open
- Available in 2-hour and 3-hour rating
- ±25% to ±50% Expansion/Contraction
- Precompressed package easy to install
- Excellent mildew resistance
- Excellent compression recovery
- Does not require mechanical fasteners
- Silicone face available in multiple standard color options
- Watertight seal conforms to minor joint irregularities

BQSWA

ACOUSTIC JOINT

silent
SEAL

- 1-6" Joint Size
- Sound reduction quality ratings of up to STC-54 and OITC-47, per ASTM E90-09
- Ideal for interior partition walls and ceilings, head of wall, exterior curtain walls, and more
- Available in 2- and 3-sided silicone facing
- Silicone face available in multiple standard color options
- Easy installation; No mechanical fasteners required
- Thermal and wind movement per ASTM E1399 standard
- Passes building materials surface burning characteristics of ASTM E84-12B



metacaulk®
FIRESTOP SOLUTIONS

FOR DRYWALL

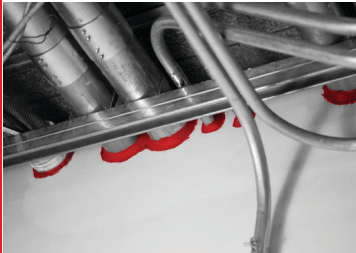
With full online resources, advanced testing, and international reach, Metacaulk® is the worldwide forerunner in firestop technology.

PREVENTS THE SPREAD OF SMOKE, SOUND AND AIRBORNE PARTICLES THROUGH JOINT OPENINGS AND THROUGH-PENETRATIONS

- High adhesion, tough long-lasting bond
- Flexible
- Non-sag
- Excellent freeze-thaw
- Paintable
- Water-based
- Mold protection
- 2-year shelf grade
- STC rating 52
- Tested in accordance with ASTM E90, ASTM E84, ASTM C834, ASTM C919, ASTM G21
- Low VOC content; meets LEED V4 Emissions requirements



EXTREMELY FLEXIBLE SINGLE-COMPONENT ELASTOMERIC SEALANT FOR CONSTRUCTION JOINT OPENINGS, CURTAIN WALLS, AND THROUGH-PENETRATIONS



- Flexible
- Non-sag
- Excellent freeze-thaw
- Paintable
- Water-based
- Mold protection
- 3-year shelf grade
- STC rating 65
- UL rated up to 4 hrs.
- VOC compliant
- Available in caulk and spray grades
- Tested in accordance with ASTM E814 (UL 1479), ASTM E1966 (UL 2079), ASTM E1399, and ASTM E90
- Manufactured by RectorSeal



PRECURED DRY-INSTALL INTUMESCENT STRIPS AND COMPRESSIBLE FOAM USED IN HEAD-OF-WALL, WALL-TO-WALL, AND BOTTOM-OF-WALL JOINT APPLICATIONS BOTH STATIC AND DYNAMIC.



- Quick and easy one step installation
- Not affected by temperature
- No hazardous ingredients
- No mechanical fastening required
- UL Classified system up to 2 hrs in gypsum walls
- Tested in accordance with ASTM E1966 (UL 2079) and ASTM E90
- L Rating < 1 CFM/LF
- STC Rating 64
- Manufactured by RectorSeal

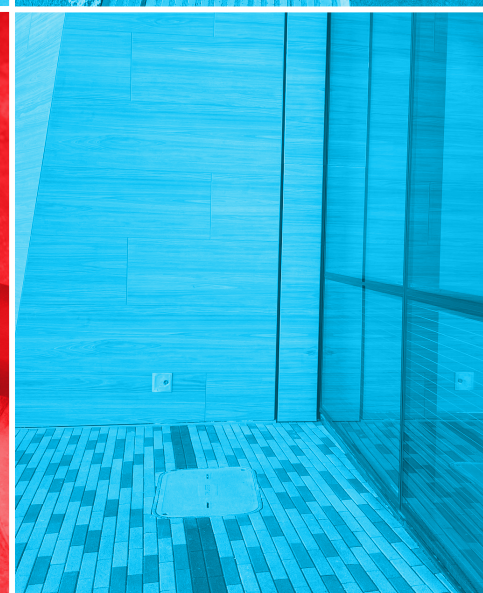
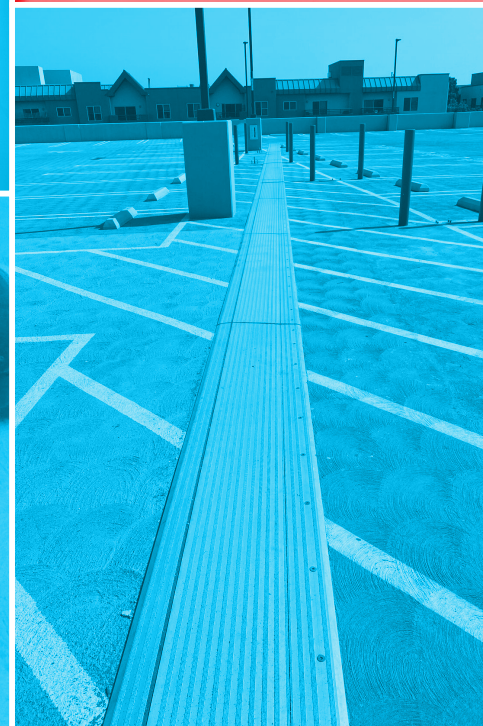


ALL-PURPOSE, HEAT-EXPANDING SEALANT FOR CONSTRUCTION JOINTS AND THROUGH-PENETRATIONS



- Flexible
- Non-sag
- Excellent freeze-thaw
- Paintable
- Water-based
- Mold protection
- 3-year shelf grade
- STC rating 65
- UL rated up to 4 hrs.
- Tested in accordance with ASTM E814 (UL 1479), ASTM E1966 (UL 2079), ASTM C834, ASTM E1399, ASTM E90, and CAN/ULC-S115
- Manufactured by RectorSeal





Balco®, Inc. 2626 S Sheridan, Wichita, Kansas 67217 316.945.9328 | 800.767.0082 balcousa.com
Balco, the logos and other trademarks are property of Balco, Inc., its affiliates or its licensors and are protected by copyright, trademark and other intellectual property laws, and may not be used without permission. Balco, Inc. reserves the right to change specifications without prior notice.
©2023 Balco, Inc. All rights reserved. B50053-0723