

CONCEAL[®]

SERIES

EXTERIOR WALL Seismic Expansion Joint System

(PSWX)

- Modular design offers multiple options to effectively blend with adjacent finishes, ideal for concealing exterior expansion joints
- Seismic movement standard (up to $\pm 100\%$)
- Skillfully engineered to allow movement without damage to cover, mechanisms or surrounding walls
- Creates completely sealed, weather-proof expansion joint

CONCEAL[®] SERIES

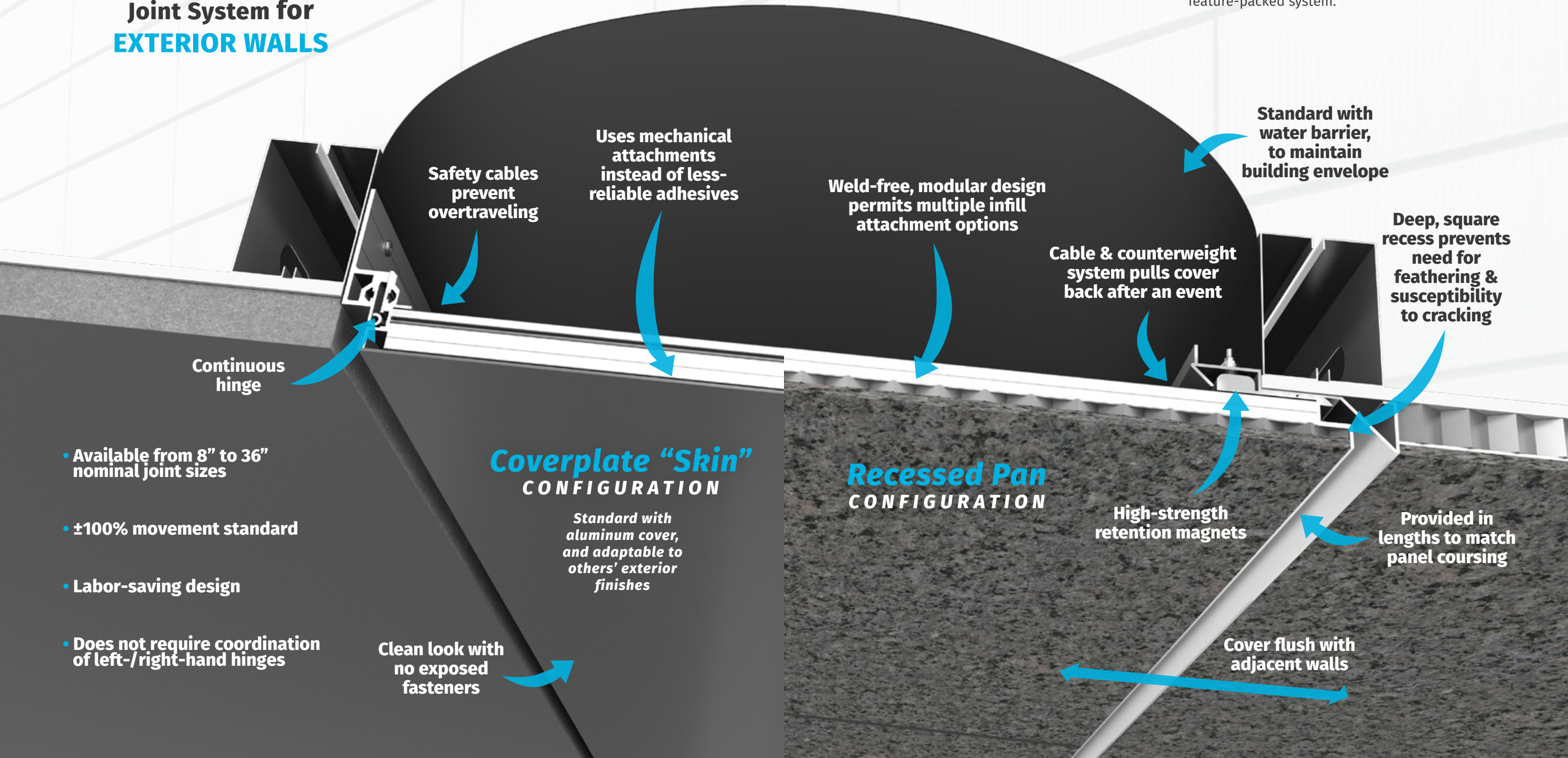
Seismic Expansion Joint System for EXTERIOR WALLS

The ConCeal[®] system for exterior, vertical expansion joints is a highly versatile cover, able to accept popular building façade panels either flush in the pan or as a skin wrapped around the cover. This efficient, modular design is able to accommodate or match a wide range of exterior finishes and cladding, allowing the assembly to blend in with the adjacent walls, causing it to essentially disappear from view.

ConCeal[®] is ideal for locations prone to higher seismic activity, especially areas with seismic building codes. The system is able to span up to a 36" nominal joint (72" max open), with a hinged door and safety cables that prevent the door from overextending after a movement event, and a cable and counterweight system that safely return the cover back to nominal

position, with high-powered magnets to help cover snap back into alignment.

This system was engineered for maximum performance. It effectively covers and weather-proofs the exterior wall expansion joint, is able to accept large movement without damage to the system or its surroundings, and becomes virtually invisible with the adjacent wall finishes, making this an ideal, concealing, feature-packed system.



Safety cables
prevent
overtraveling

Uses mechanical
attachments
instead of less-
reliable adhesives

Weld-free, modular design
permits multiple infill
attachment options

Cable & counterweight
system pulls cover
back after an event

Standard with
water barrier,
to maintain
building envelope

Deep, square
recess prevents
need for
feathering &
susceptibility
to cracking

Continuous
hinge

- Available from 8" to 36"
nominal joint sizes

- ±100% movement standard

- Labor-saving design

- Does not require coordination
of left-/right-hand hinges

Coverplate "Skin" CONFIGURATION

Standard with
aluminum cover,
and adaptable to
others' exterior
finishes

Clean look with
no exposed
fasteners

Recessed Pan CONFIGURATION

High-strength
retention magnets

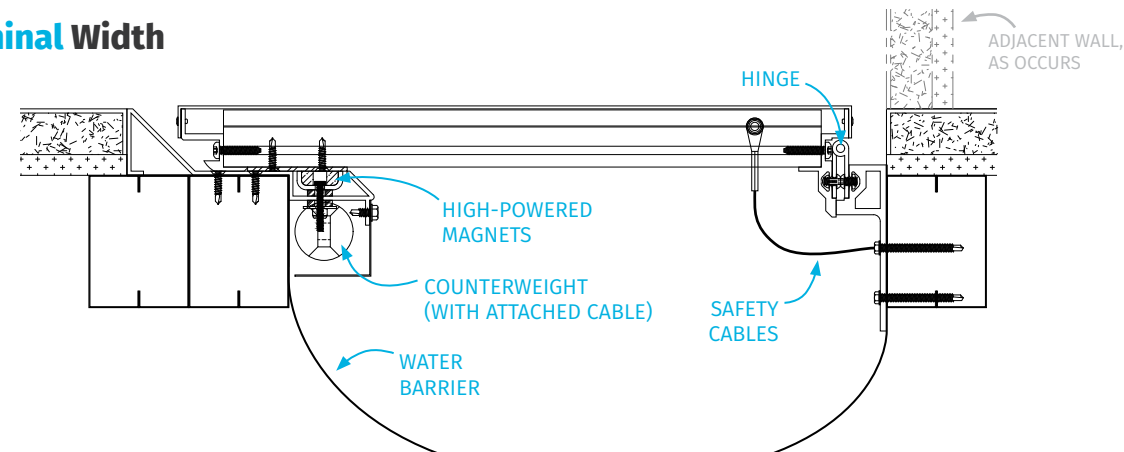
Provided in
lengths to match
panel coursing

Cover flush with
adjacent walls

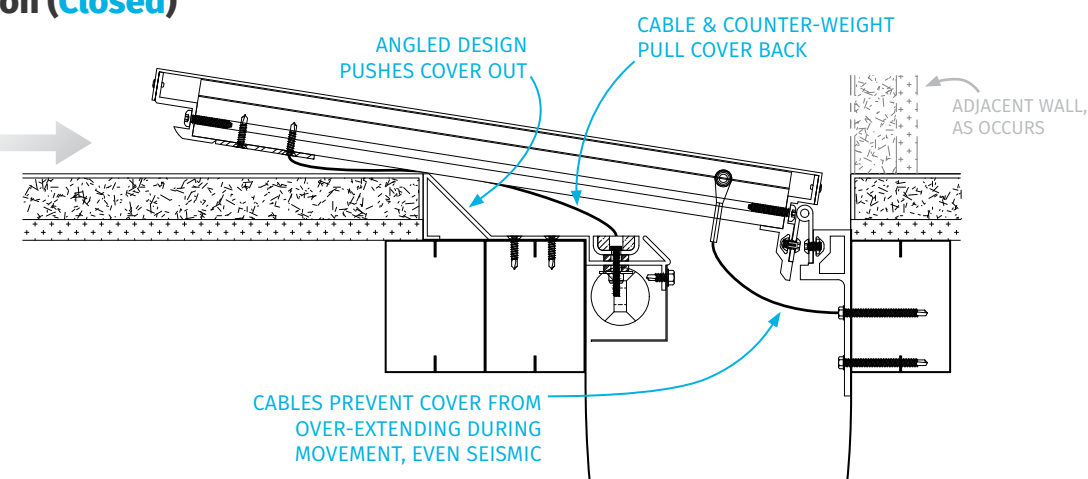


Expansion/Contraction Movement

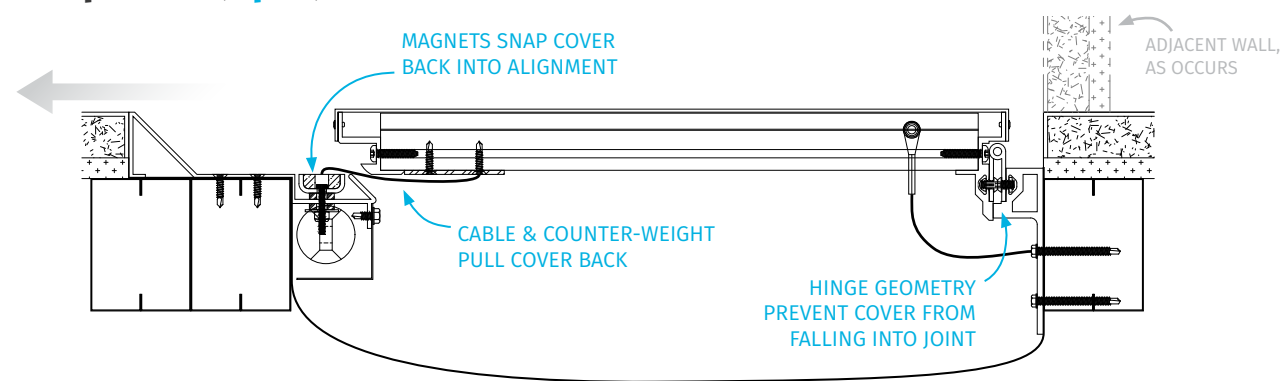
At Nominal Width



Contraction (Closed)



Expansion (Open)



*ConCeal System not for horizontal use.

EXPANSION JOINT SYSTEMS
ARCHITECTURAL SYSTEMS
EXTERIOR WALLS
METAL COVER SYSTEMS

CONCEAL
SERIES



APPLICATION

- Seismic, exterior wall cover that blends in with surrounding wall finishes

FEATURES

- Modular system, adaptable to accept infill materials or plate wrapped around surface; factory-provided plate configuration standard
- Hinged door with safety cables permits up to seismic movement without damage
- Counterweight and cable system safely returns cover back to nominal position after event; powerful magnets help cover snap back into alignment
- Splicing-capable
- Ships in lengths to match panel coursing, 6' (1.8m) min, 10' (3m) max
- Comes standard with secondary water barrier and seals in between panels
- Not for horizontal use

PERFORMANCE

- Seismic, Thermal and Wind movement tested per standard ASTM E 1399



- Contributes to LEED® credits

JOINT SIZES (nominal)

8-36" (200-900mm)

MOVEMENT

±50% to ±100% Expansion/Contr.



Lateral Shear (Contact Factory)

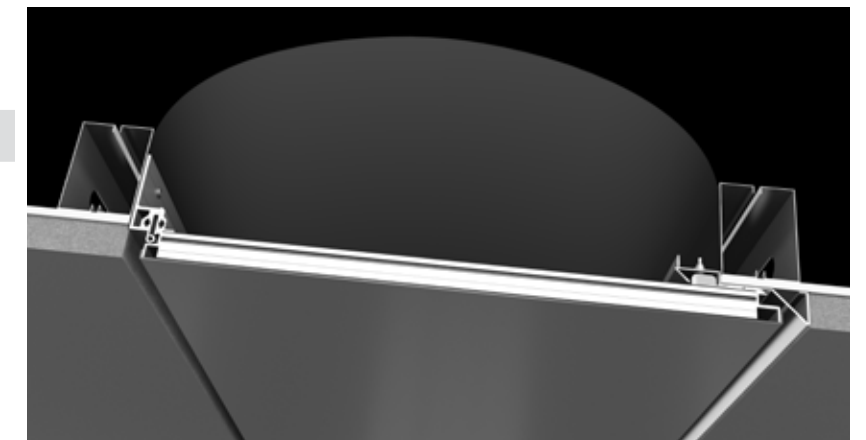


Vertical Shear (Contact Factory)



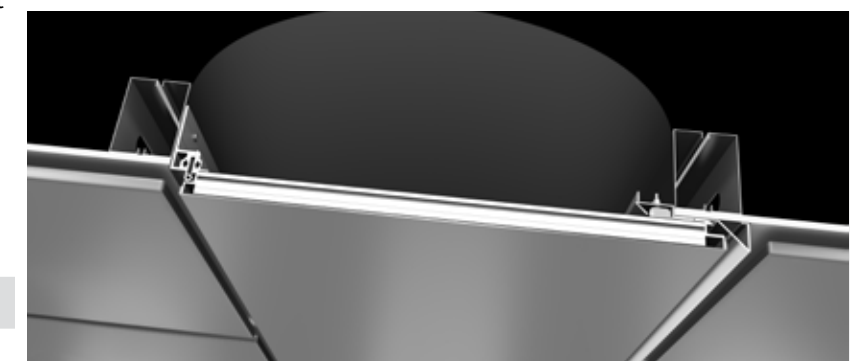
PSWXP

Plate



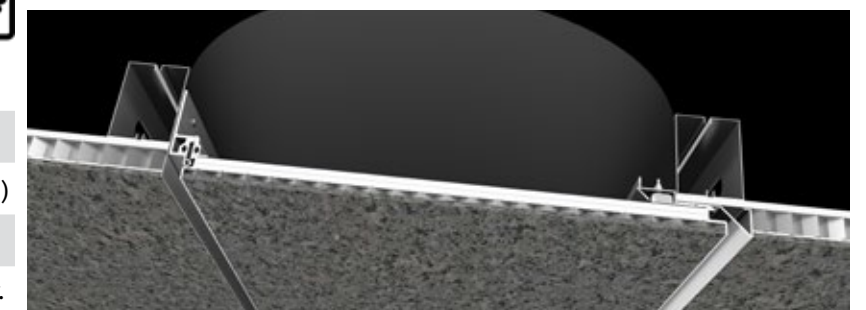
PSWXP

Field Plate

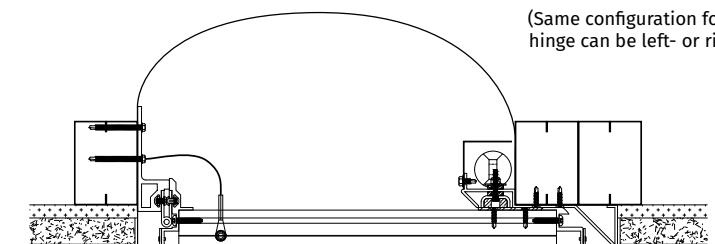


PSWXR

Recess



PSWXP - Wall-to-wall and Wall-to-corner
(Same configuration for either, and hinge can be left- or right-handed)



balcousa.com



1.800.767.0082



OTHER EXTERIOR EXPANSION JOINT SYSTEMS

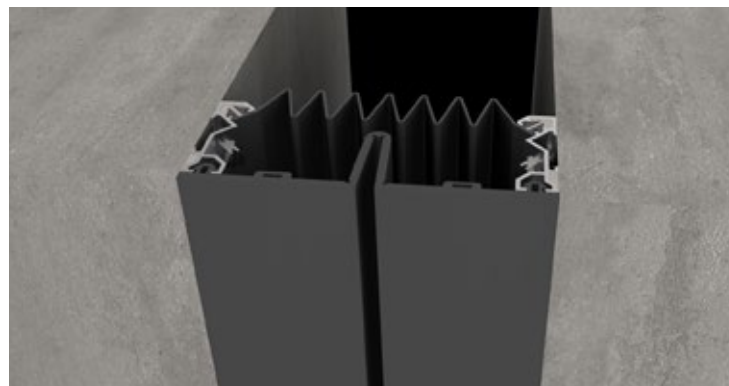
WALL ELASTOMERIC FACE SEAL SYSTEM

EV

Silicone Face

MICHAEL RIZZA PREMIUM SILICONE

- Available in 2-12" joints (nominal size)
- Up to $\pm 50\%$ movement and $\pm 50\%$ lateral shear
- Flush with surrounding wall
- Water barrier standard



PARKING METAL COVER SYSTEM

DHF

Surface Mount Dual Hinge

- Available in 2-8" joints (nominal size)
- Up to $\pm 50\%$ movement, $\pm 100\%$ lateral shear and 1" vertical shear
- Up to slow vehicular load capacity; ADA compliant
- Water barrier standard



ROOF METAL PLATE SYSTEM

9W

Flat Curb

- Available in 2-18" joints (nominal size)
- Up to $\pm 100\%$ movement and $\pm 100\%$ shear
- Water barrier standard for complete weatherproof seal
- Centering bar device holds cover in place



balcousa.com



1.800.767.0082

metaFLEX^{PRO} S E R I E S

HIGH-PERFORMANCE FIRE BARRIERS

balcousa.com/metaflexpro



A CSW Industrials Company

RENOWNED ARCHITECTURAL PRODUCTS



PARTITION CLOSURES

Simple, silicone seal that easily fills the void between partition walls and exteriors



STAIR NOSINGS

Slip-resistant protection for the leading edge of walkways, slopes and stairways



TRENCH AND ACCESS

Tailored cover options for sub-floor access to utilities



FIRE BARRIERS

Simple, dynamic, code-compliant solutions for fire-rated joints



MATS AND GRIDS

Treatments for entrance floors with aesthetic style, slip safety and floor protection



ILLUMITREADTM EGRESS

Reliable, code-compliant solutions for Illuminating egress paths

LEARN MORE AT BALCOUSA.COM

CONCEAL[®]

SERIES

EXTERIOR WALL Seismic Expansion Joint System



A CSW Industrials Company

CERTIFIED ISO 9001
Quality Management System



Balco[®], Inc. 2626 S Sheridan, PO Box 17249, Wichita, Kansas 67217 Phone 316.945.9328 800.767.0082 balcousa.com

Balco, the logos and other trademarks are property of Balco, Inc., its affiliates or its licensors and are protected by copyright, trademark and other intellectual property laws, and may not be used without permission. Balco, Inc. reserves the right to change specifications without prior notice.

© 2012–2019 Balco, Inc. All rights reserved. B50057-0419